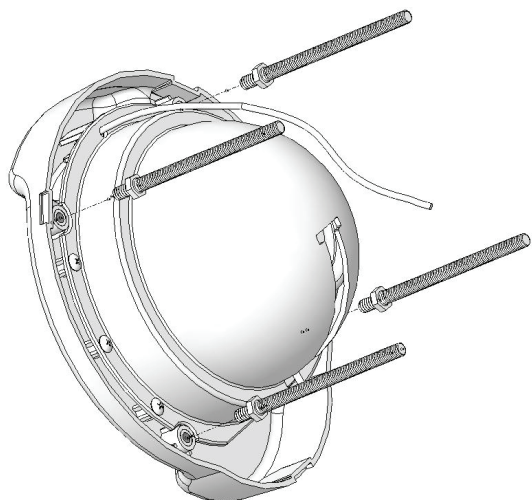


## Venture SR-2

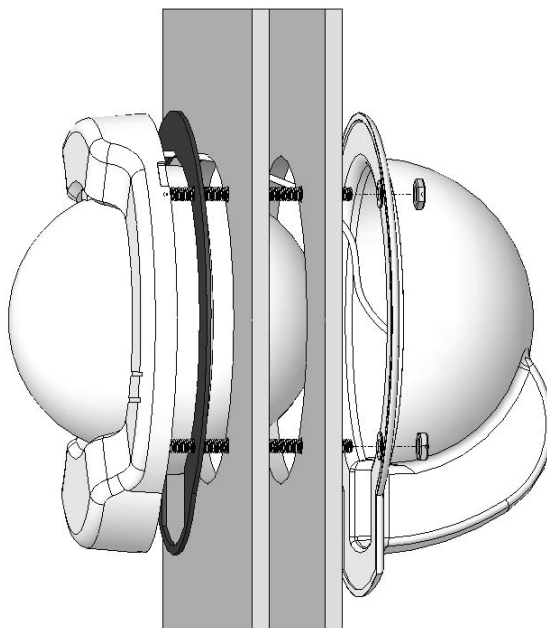


Insert Mounting Studs, provided

### Important Note:

Check your compass location for onboard deviation.

The SR-2 does not ship with a built-in compensation system. Optional compensator kits are available (Part # SR-CM2)



Mount Compass

(See Mounting Template for hole dimensions)

Optional compensator kit not shown

## Inclinometer (INC-45) Installation

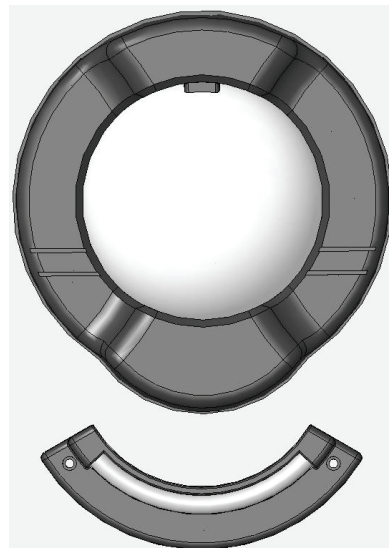
If the inclinometer is being installed under the SR-2:

- Complete the compass installation first.
- Make sure you leave enough room for the protective cover.

The boat must be level before installing the INC-45. Use a carpenter's level on a flat surface to check. If the boat is in the water you can level it by shifting weight port to starboard (the crew works well).

Once the boat is level:

- Select the desired mounting location.
- Mark and drill (#36 or 7/64" drill) one mounting hole.
- Install the unit with 1 mounting screw (provided) and rotate until the ball is at 0°.
- Mark and drill the other hole and secure the unit with the other screw.



E.S. Ritchie & Sons, INC. 243 Oak St.,  
Pembroke, MA  
[www.ritchienavigation.com](http://www.ritchienavigation.com)

Rev A - 6/08 BK-0023  
Printed in U.S.A.